

[News](#) Fri 30 Jan 2009, 2:07 am GMT

[News archive](#)

## Santa Cruz launches new Driver 8 mountain bike

By James Huang, technical editor

**Fresh on the heels of its new Blur XC carbon fiber cross-country racer, Santa Cruz has now released pictures and information on an upcoming long-travel model called the Driver 8.**

As the name suggests, the Driver 8 sports 8in (200mm) of rear wheel travel via a long 70mm-stroke (2.75in) shock and Santa Cruz intends it as a "general duty, daily driver gravity hauler [that is] more lively and poppable and jumpable than the V-10." Also in keeping with that theme are the 1.5in head tube, 150mm rear hub and 83mm-wide bottom bracket shell spacing, 12mm Maxle rear thru-axle, integrated ISCG05 tabs and relatively low 383mm (14.5in) bottom bracket height optimized for 165-170mm crankarms.

The frame geometry is based around a 180-203mm fork and according to Santa Cruz, 95 percent of 2.7in tires will fit. Head tube angle is a stable 67° across the three-size range and wheelbase runs from 1087-1168mm (42.8-46.0in), all with 442mm-long (17.4in) chain stays.

Though clearly meant to hold its own at the bike park, Santa Cruz says the Driver 8 can also serve double-duty as a full-on downhill race bike for anything short of a World Cup course. Claimed frame weight is approximately 4.8kg (10.6lb) for a medium anodized frame equipped with a RockShox Vivid 5.1 rear shock.

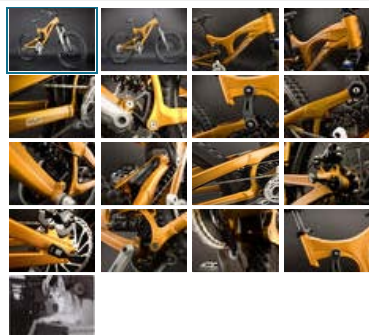
Still, the Driver 8 is also meant to be pedaled uphill when necessary – albeit slowly – but Santa Cruz PR man Mike Ferrentino is quick to point out that it is not intended as a replacement for the now-defunct VP-Free but rather more of a dedicated gravity machine.

The abbreviated seat tube still offers nearly 18cm (7in) of height adjustment – allowing it to go nearly as high as a comparable Nomad yet even lower than the current V-10 – but there is no provision for a front derailleur. And while the Driver 8 will work with Truvativ's new HammerSchmidt drivetrain, it probably won't pedal that well if you fit a Hammerschmidt as the suspension is designed around a 36-40T chainring.

As with all of Santa Cruz's recent introductions, the Driver 8 will feature second-generation Virtual Pivot Point (VPP) suspension architecture, which Santa Cruz says offers more usable travel throughout the range and decreased chain growth to minimize kickback. The massive aluminum lower link sports **eight** angular contact cartridge bearings, an integrated grease port, and a combination of contact and labyrinth seals for increased side load capacity and extended service intervals. The new carbon upper link is fitted with four radial contact bearings.



Santa Cruz debuts its latest gravity model, the Driver 8. (Santa Cruz Bicycles)



### Related articles



#### Exclusive video: Santa Cruz carbon Blur XC

Straight from the horse's mouth in California

#### Santa Cruz introduces carbon fibre Blur XC

#### Santa Cruz Nomad X0 AM Lyric

#### Santa Cruz Chameleon

#### Eurobike dirt 3: Santa Cruz, Endorfin, Cube and Corsair

#### World Cup downhill action from Santa Cruz Syndicate

#### Santa Cruz Blur LT

### Related links

#### Santa Cruz Bicycles

BikeRadar is not responsible for the content of external websites

### Also on BikeRadar

#### News



#### Steve Peat releases coffee table book

Look back at world downhill...

#### News



#### Cycling cities league table sparks controversy

Our sister mag Cycling Plus...

#### Racing



#### Race tech: Tour of Flanders

Careful equipment selection...

#### Fitness



#### Fitness: How music can help your training

Good tunes can help your...

#### Blogs



#### Video: MBUK at Chicksands

Behind the scenes video in...

### Most Viewed

### Most Commented



#### Cannondale Six Carbon named 2010 Bike of the Year

Lowdown on the 50 contenders for the road bike crown

#### Video: Chris Akrigg on an old fashioned thrash

#### BMC suspend Ballan and Santambrogio amid doping probe

#### Preview: 108th Paris-Roubaix

Production frames will not be available until mid-May but Santa Cruz will accept frameset orders immediately and complete bike orders as of April 1. Official pricing stands at US\$2399 for a powdercoated frame equipped with a RockShox Vivid 5.1 or US\$2561 with a Fox Racing Shox DHX RC4. Anodized finish options will cost an additional US\$200.

You can follow BikeRadar on Twitter at [twitter.com/bikeradar](https://twitter.com/bikeradar) and on Facebook at [facebook.com/BikeRadar](https://facebook.com/BikeRadar).

[Back to top](#) | [Email to a friend](#)

Post this story to:

- Digg
- del.icio.us
- reddit
- Facebook
- StumbleUpon

[What is this?](#)

### User Comments

There are 2 comments on this post

**reluctant** Posted Fri 30 Jan, 7:53 am GMT | [Flag as inappropriate](#)

Take a break, Driver 8! ;-)

**warchild** Posted Thu 2 Apr, 10:49 pm BST | [Flag as inappropriate](#)

wot a sick bike, oh yes she will b mine!!!!!!!!!!!!!!

1

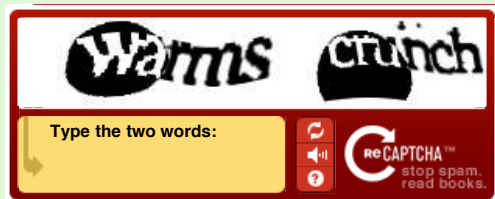
### Post comment:

You need to login or [register](#) to post comments.

Username

Password

Please confirm you are a person by entering the words in the box below:



Comment

[BikeRadar Deals of the Week – Road Bikes](#)

[BikeRadar Deals of the Week – Mountain Bikes](#)

**Forum** Updated: Fri Apr 9, 2010 9:22 pm [Join in!](#)

[My first long ride!](#)

[Fat bloke wanting to start cycling to work](#)

[Skid Lid](#)

[Superstar VS Hope](#)

[Your Dream Bike - Whats Holding You back?](#)

[Slow rides for unfit people - Llandegla Sat 10th April](#)

[Morpeth Social Club](#)

[FS; Crossrides , KSI900 seatpost , light&motion arc and](#)

[I was planning on going to sleep tonight...](#)

[Cervelo S1 Seatpost](#)

**Routes & Riding**

[Upload your route](#)

**Bikely, Routes and Riding**

[www.bikely.com](http://www.bikely.com)

You Are Here: [Home](#) ▶ [News](#) ▶ [Santa Cruz Launches New Driver 8 Mountain Bike](#)

[Home](#) [Road](#) [Mountain Biking](#) [Commuting](#) [Beginners & Family](#)

All BikeRadar

[Search](#)

- [News](#)
- [Road News](#)
- [Mountain Biking News](#)
- [Commuting News](#)
- [Beginners & Family News](#)

- [Gear and Reviews](#)
- [Road Bikes](#)
- [Mountain Bikes](#)
- [Time Trial / Triathlon Bikes](#)
- [Hybrid Bikes](#)
- [Urban Bikes](#)

- [Workshops & Buyers Guides](#)
- [Workshop: How to clean and lube your bike](#)
- [Workshop: Emergency bike repairs](#)
- [Workshop: Mechanics' Tips](#)
- [Buyers guide to: Commuting in the dark](#)
- [Buyers guide to: UK tax free bike schemes](#)

- [BikeRadar](#)
- [Terms and Conditions](#)
- [Privacy Policy](#)
- [About us](#)
- [Advertising](#)
- [Jobs](#)